

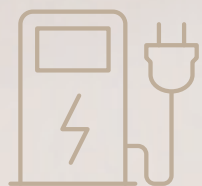
IMTIAZ

DEVELOPMENTS

• AMENITIES •



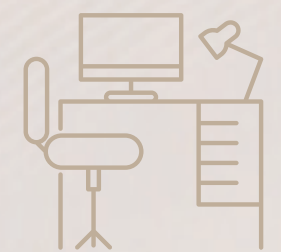
Club Room
with billiard table



Electric vehicle
recharge Station



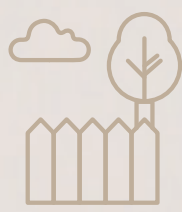
Fully furnished with
custom made furniture



Built-in office for
work from home



Fully equipped gym



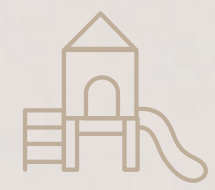
Courtyard



Rooftop pool



Extra visitors
parking



Kids
play ground

• BRANDED FEATURES •

GESSI

Sanitaryware

GROHE

Purified drinking
and sparkling water

■ GEBERIT

Sanitary
Fixtures

alexa

Smart home
Technology

FONDOVALLE

Italian tiles

SAMSUNG

65 inch TV



iMac 24 inch



BOSCH

Appliances

Pearl
House II
BY IMTIAZ

www.imtiazdevelopments.com

800 IMTIAZ (468429)